



## Call for Proposals

### Ghana Shea Landscape Emission Reductions Project

---

#### Introduction

The Global Shea Alliance (GSA) in partnership with the Forestry Commission (FC) of Ghana and the United Nations Development Programme (UNDP) announces this call for proposals from NGOs and private sector actors in the shea space (in a Public-Private Partnership (PPP) arrangement) for the implementation of the Ghana Shea Landscape Emission Reductions Project (GSLERP) which is funded by the Green Climate Fund (GCF).

#### Background

The Ghana Shea Landscape Emission Reductions Project (GSLERP) was approved in 2020 by the GCF to run for seven (7) years in the Northern Savannah Zone (NSZ) of Ghana which has a fragile ecosystem sensitive to the effects of climate change. GSLERP seeks to enhance forest carbon stocks across the landscape by:

- restoring 200,000 hectares of off-reserve savannah forests/woodlands and place them under self-financing community management in Community Resource Management Areas (CREMA);
- restoring 100,000 hectares of degraded shea parklands;
- creating 25,500 hectares of modified taungya system/forest plantation in severely degraded forest reserves, and;
- implementing an integrated monitoring system and completing the national REDD+ architecture for safeguards, forest monitoring and reporting systems.

GSA is focusing on Output 2 (Degraded shea parklands restored through public private partnerships (PPP)), with specific focus on setting up of community nurseries tree planting, and parkland management training activities setting up cooperatives, sourcing programmes, constructing warehouse for aggregation and conducting quality control and business training through their direct funding. These will have the following overall project results:

- 100,000 ha of degraded shea parklands restored;
- 3.5million shea seedlings and 480,000 additional other native tree seedlings planted;
- 70 community-based cooperatives trained on parkland management practices including grafting, pruning, parasite control, natural regeneration, and bush fire management/control; and 300 women trained in restoring shea, business skills, setting up cooperatives, managing warehouses, and direct marketing,
- 26 women's cooperatives established; and

- 70 additional village nurseries created with employment for 700 women (10 women per nursery).

## Eligibility

Interested NGOs who wish to form partnerships with private sector companies in the shea industry of Ghana can apply. All applications must include women cooperatives (not necessarily formed yet) who will manage the community nurseries.

### The application involves two stages:

- **Stage 1:** NGOs in Ghana who have experience in agroforestry, parkland management, and knowledge of the northern savannah zone (NZS) of Ghana should first submit Expression of Interest (EOI) to the GSA detailing their experience and qualifications.
- **Stage 2:** NGOs whose EOI pass, will be invited to pair with interested private sector companies (GSA members) in a Public Private Partnership (PPP) arrangement which should involve women cooperatives (in their chosen locations in the NZS) to present a composite proposal which will be submitted by the NGO on behalf of the partnership. The passed EOIs will be shared with potential private sector partners to select.

## Description of activities

A partnership proposal should address output 2 of GSLERP (i.e., restoration of degraded shea parklands) - focusing specially on the following activities:

Activity 1: Restore and sustainably manage the shea parklands.

- Establish community-based nurseries for shea and other tree seedlings.
- Undertake tree planting and farmer management of trees and fallow vegetation.
- Train and build capacity of women's cooperatives on sustainable parklands management, and provision of improved cookstoves.

Activity 2: Strengthen value chains for shea processing.

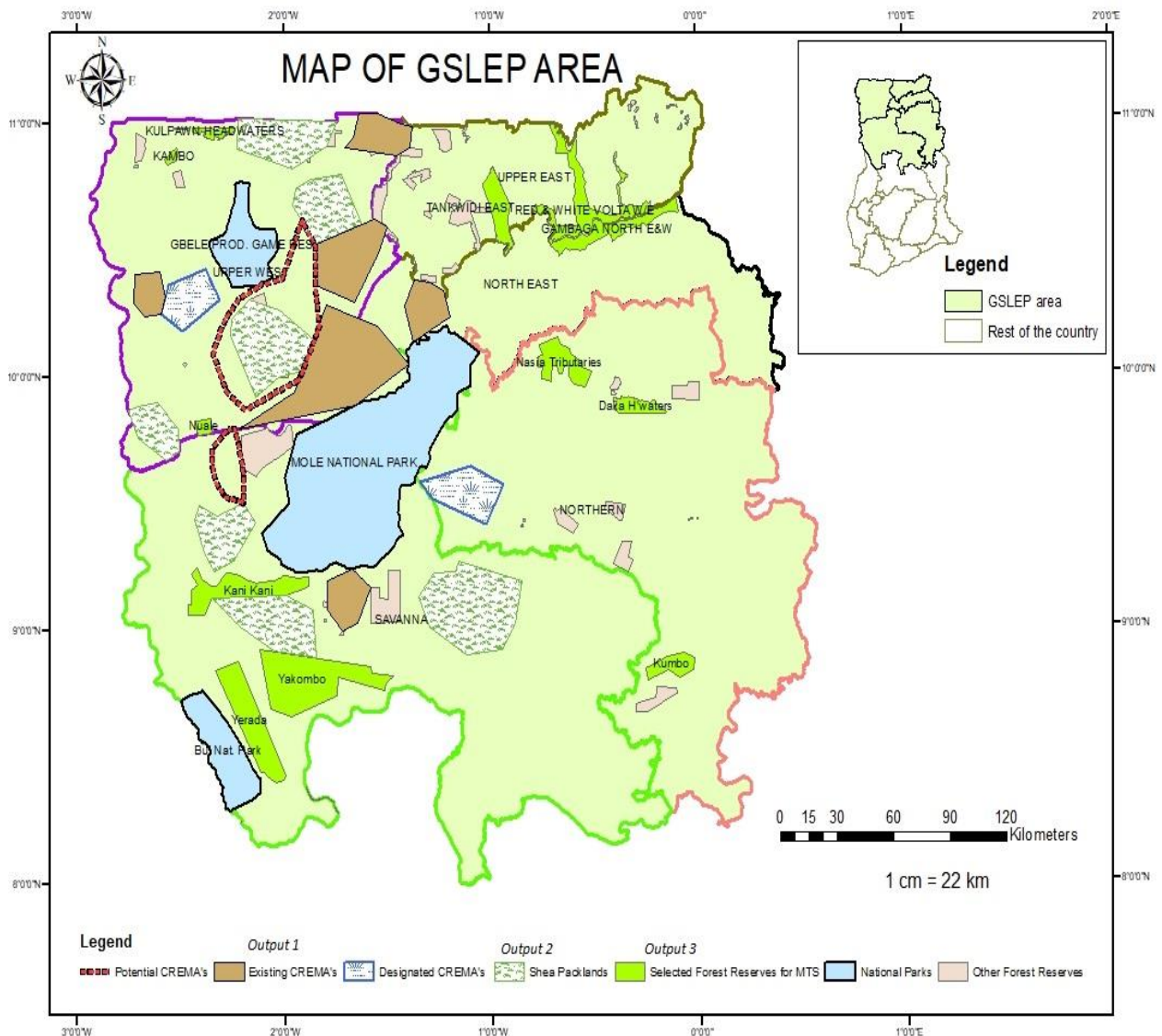
- Establish women's groups (including governance training and co-operative registration).
- Conduct activities to support aggregation and marketing, including construction of warehouses.
- Train women's groups on Improved technologies and efficiency (including audits, technical training, product quality training).
- Train women's groups on improved business management including contract management and market linkages, as well as development and use of improved cookstoves.

Activity 1 will be paid for by the GCF and implemented by the partnership. The private sector will provide complimentary funding for activity 2.

A minimum match of 100% (1:1) is expected from a private sector partner for a project which should last for a minimum of **3 years and a maximum of 5 years**. Applications with matched funding of more than 100% from the private sector are highly encouraged.

## Project location

The Northern Savannah Zone (NSZ) of Ghana with shea parklands. Proposed sites are indicated in the Map attached below.



## How to apply

Applicants can submit their enquiries and completed applications to the Director of Action for Shea Parkland (ASP) at the GSA, Dr. Shaibu Baanni Azumah (email: [s.azumah@globalseah.com](mailto:s.azumah@globalseah.com)) and copy the Director of Development, Marie Veyrier (email: [mveyrier@globalseah.com](mailto:mveyrier@globalseah.com)).

- The closing date for the submission of EOI is: **31<sup>st</sup> December 2021**
- Decision on EOIs will be made and communicated by: **21<sup>st</sup> January 2022**
- The closing date for the submission of full proposal is: **18<sup>th</sup> February 2022**

Kindly download the application documents (including the Expression of Interest (EOI) Template; Full Proposal Template; GANTT Chart and Budget Templates) [HERE](#).